



OEC One

Bringing you a Clear View of the images you demand.



The OEC One™ all-in-one mobile C-arm goes beyond providing the exceptional image quality you expect from OEC – images how you need them. OEC One also creates greater visibility of images – images where you need them – with its articulating arm, and images when you need them with its attached tablet, providing synchronized image viewing and quick image adjustment. This is OEC One's Clear View – images where, when, and how you need them.

A Clear View WHERE you need it.



Flexibility in viewing: Triple joints, providing five ranges of motion, including 210° of swivel at mainframe and 40 cm (15.8 in) of image display vertical travel, enable your tech to position the display rapidly and precisely.

Close

You can now get the images you need closer to the surgical field—even right to the edge of the table—thanks to OEC One's extendible, articulating display arm.

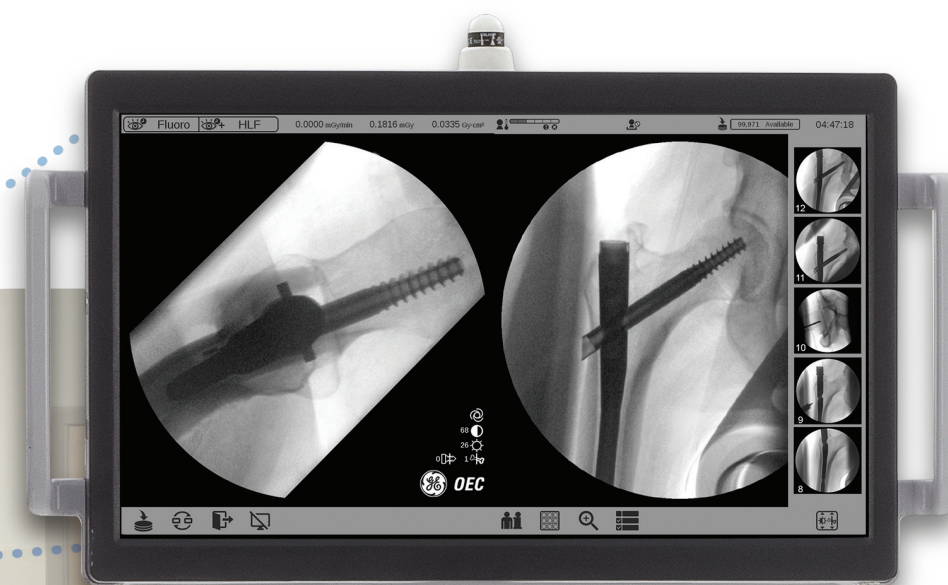
Clear

View crisp, clear detail right in front of you on a 27" high resolution image display with 11.8" live and reference images.

Accessible

Whether on the right or left of the C-arm, while standing or seated, enjoy better line of sight to the images you need, due to the image display monitor's range of motion and its 178° viewing angle.

A Clear View WHEN you need it.



Synchronized image viewing

Effective communication and timely delivery on clinical expectations are facilitated by the synchronized view of the live image on both the image display monitor and TechView tablet. A gallery of procedural images, exhibited on OEC One's Mini ID Panel, can also be viewed on both the image display and TechView tablet when accessed from the tablet with the touch of a button. Easily compare images as needed during the procedure.



Control at tablet

Get the image you need when you need it, thanks to OEC One's TechView tablet with a user interface that's both quick to learn and quick to use. The TechView tablet is designed to provide the surgical team image adjustment commands right at the system. Through one-button touches and finger-swiping motions in quickly-accessed screens, adjust image generation, image display, and X-ray technique.

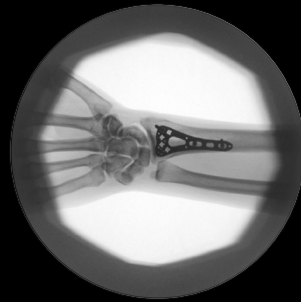
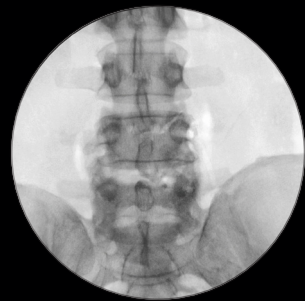
Fast access

OEC One's C-arm design offers patient access and is easily positioned using handles that run the full length of the C-arm on both sides, and color-coded locks that match C-arm movements. Align anatomy with additional precision using OEC One's laser aimers*, potentially reducing retakes and eliminating unnecessary exposure. Get a Clear View of the patient even when anatomy is not centered, thanks to AutoTrak and Auto Brightness Stabilization image processing software.

*Availability of select models, configurations, and options varies by country. Please contact your local sales representative.



Image Gallery



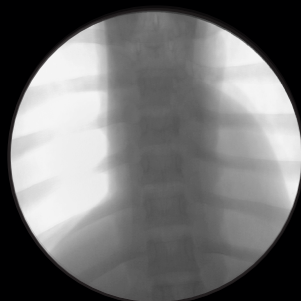
See the images you expect with OEC One: sharp and detailed. Capture without adjusting system settings or manage image settings according to clinical preference on the system's TechView tablet.

Image Processing Enhancements

Adaptive Dynamic Range Optimization (ADRO)



With ADRO

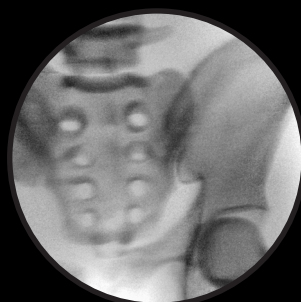


Without ADRO

Enhanced Motion Artifact Reduction



With Enhancement



Without Enhancement

OEC One offers trusted OEC image processing as well as software enhancements that can improve image quality while capturing images of anatomy with very different density (ADRO) and amidst motion (Enhanced Motion Artifact Reduction).

A Clear View HOW you need it.

OEC Image Processing

Enjoy image processing software enhancements:

- Adaptive Dynamic Range Optimization (ADRO)
- Enhanced Motion Artifact Reduction
- Temporal Noise Reduction

Get images you need, thanks to trusted OEC software:

- AutoTrak
- Automatic Brightness Stabilization (ABS)
- Smart Metal
- Smart Window

Point-and-shoot

Get the images you need without adjusting system settings from the first to the last shot with OEC One's combination of a compact generator, high resolution camera, image intensifier, and OEC image processing software. OEC One utilizes automatic intelligence software to sense anatomy and provide high quality imaging at optimal mA and kV levels, even when anatomy is not properly centered in the field of view.

Clinical preference

Obtain clinical images according to your preference, right at the OEC One system. Image orientation, image intensifier field size, collimation, brightness and contrast, and more can all be easily accessed from the TechView tablet and quickly delivered to your live image view.

For further dose management, adjust kV and mA or select pre-defined fluoro modes — such as low dose or pulsed fluoro — on the TechView tablet right at the OEC mainframe. OEC One's X-ray foot switch and hand switch also provide flexibility in controlling X-ray generation.

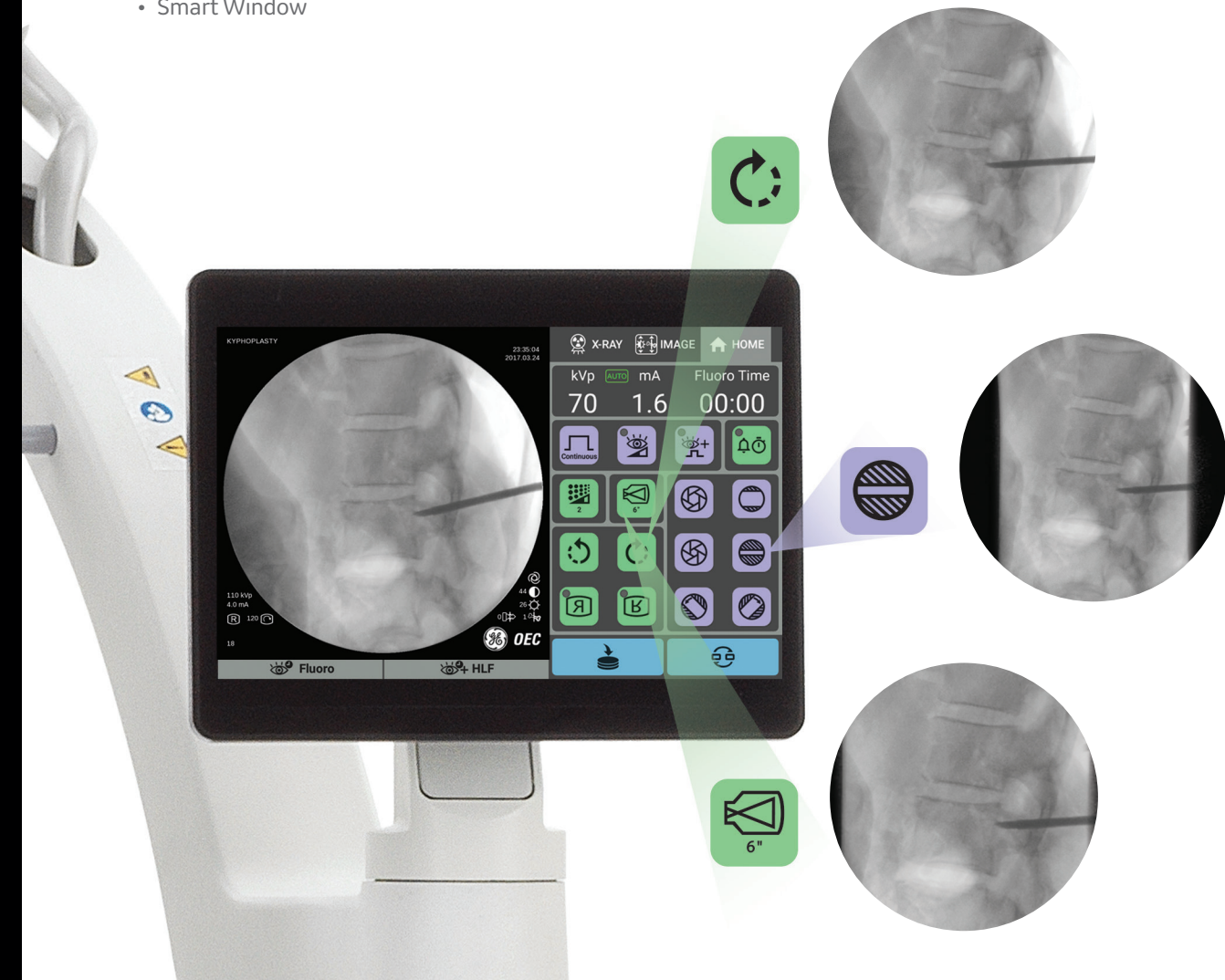
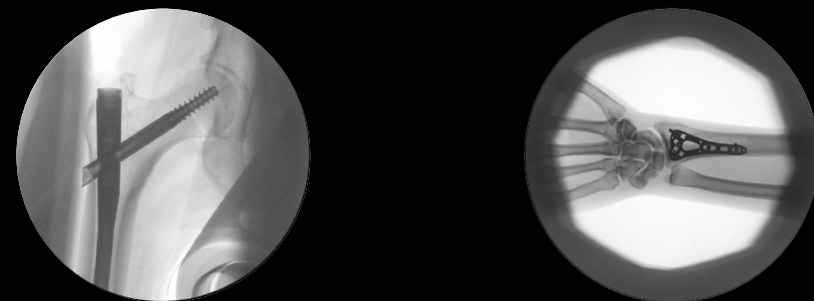
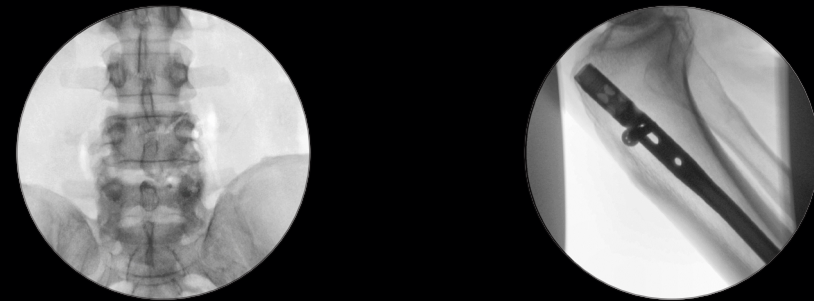


Image Gallery



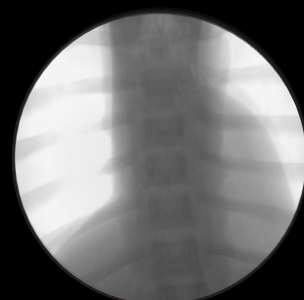
See the images you expect with OEC One: sharp and detailed. Capture without adjusting system settings or manage image settings according to clinical preference on the system's TechView tablet.

Image Processing Enhancements

Adaptive Dynamic Range Optimization (ADRO)



With ADRO

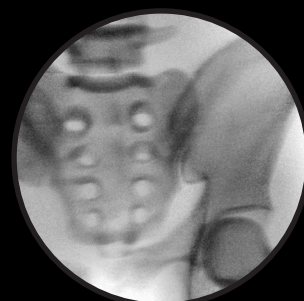


Without ADRO

Enhanced Motion Artifact Reduction



With Enhancement



Without Enhancement

OEC One offers trusted OEC image processing as well as software enhancements that can improve image quality while capturing images of anatomy with very different density (ADRO) and amidst motion (Enhanced Motion Artifact Reduction).

OEC One

Digital Mobile C-arm

Detailed, high res images

- High DQE (65%) image intensifier
- 1k x 1k camera

Exposure control

- Removable anti-scatter grid
- Low dose mode

Positioning precision

- Color-coded pivot joints and locks
- Free space in arc of C-arm
- Laser-aimers*

Power for optimal IQ

- 40 kHz frequency
- Continuous fluoroscopy
- Digital spot
- Ample heat management

Close, clear, accessible

- 27" image display on articulating arm
- Handles along sides and back of monitor
- 11.8" live and reference images
- Live image mirrored on TechView tablet

Image access

- 10.1" TechView touchscreen tablet provides commands on simple UI
- 1280 x 800 resolution
- 270° swivel and 40° tilt

Easy handles

- Along full length of C-arm on both sides
- Ergonomic design for simple maneuvering

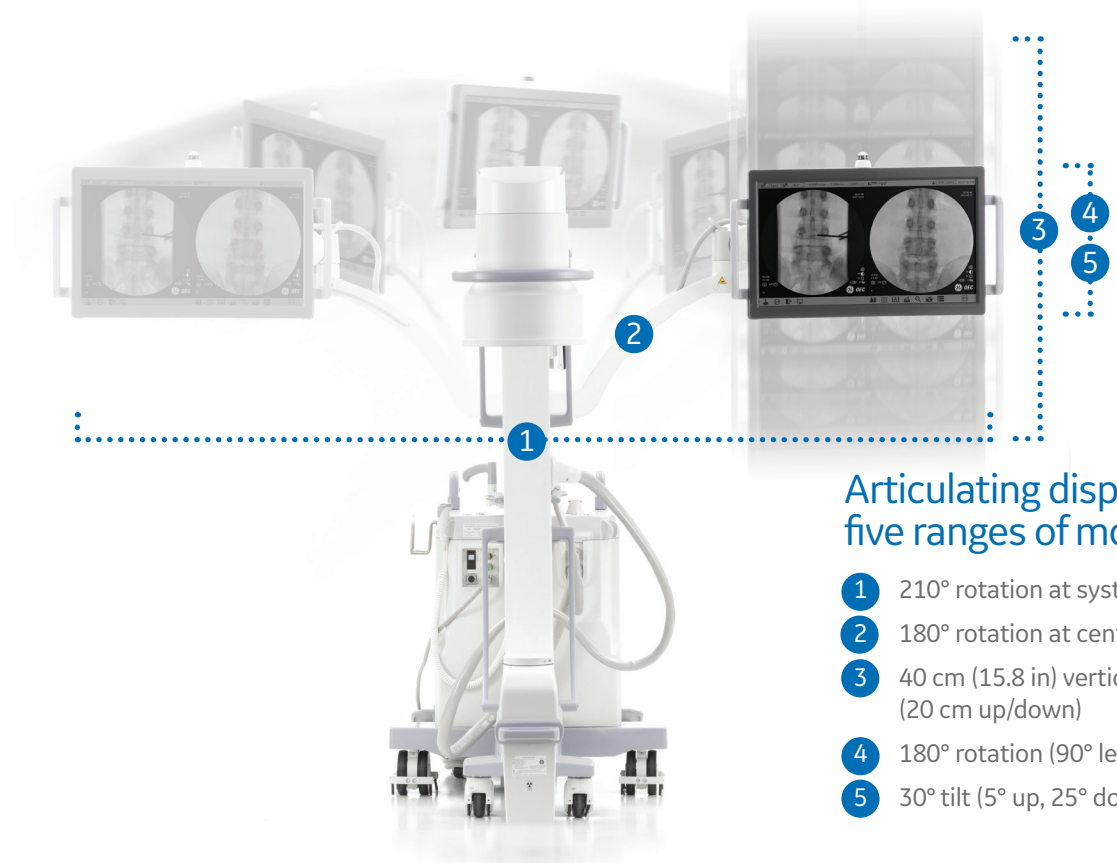
Connectivity

- Wireless DICOM*
- Digital video output
- USB data transfer

Sustainable

- Protection against temporary power loss
- OEC reliability

* Availability of select models, configurations, and options varies by country. Please contact your local sales representative.



Articulating display arm — five ranges of motion

- 210° rotation at system
- 180° rotation at center of arm
- 40 cm (15.8 in) vertical travel (20 cm up/down)
- 180° rotation (90° left/right)
- 30° tilt (5° up, 25° down)



Clears up space

Smallest footprint in its class

Eliminates monitor cart

All-in-one design provides all functionality at system on TechView and display

Maneuvers where needed

Counterbalanced and lightweight

Bringing you a Clear View of the images you demand - where, when, and how you need them.
 ORTHOPEDIC • SPINE • GENERAL SURGERY • UROLOGY • PAIN MANAGEMENT

Availability of select models, configurations, and options varies by country.
Please contact your local sales representative.

Imagination at work

©2017 General Electric Company – All rights reserved.

General Electric Company reserves the right to make changes in specifications and features shown herein, or discontinue the product described at any time without notice or obligation. Contact your GE Representative for the most current information. GE, GE Monogram, OEC, and OEC One are trademarks of General Electric Company. GE OEC Medical Systems, Inc., doing business as GE Healthcare.



JB53403XX