

IDI Aspect Tables Catalog

Aspect™ Series Imaging Tables

Because Image Quality Matters – Invest in a table that is up to the task



Massachusetts-Based/Veteran Owned

T
A
B
L
E
S

idi

Image Diagnostics, Inc.
Safety, Simplicity, Quality

Table of Contents

Aspect Tables Key Features	3
Tables for Vascular & Interventional Imaging	4
Tables for Pain Management and General C-Arm Imaging Applications	9
Tables for Swallow Studies & Upright Imaging/Patient Loading	14
Urology & GYN Tables.....	15
Four-Way Float Top Tables Specifications & Accessory Matrix.....	18
Pain Management Table Specifications & Accessory Matrix	19
Endourology Tables Specifications & Accessory Matrix	20
Tabletops for Aspect Mobile Imaging Tables	21
Product Support & Customer Service.....	22



IDI's MDS Mobile Display System
shown with Aspect 100UCPlus Urology table



IDI's MDS Mobile Display System
shown with Aspect ISR G2 Vascular Imaging Table

**Looking for solutions and not just products?
Ask us about the MDS mobile video display and integration system.
Create an Instant OR in virtually any room - and best of all, it's mobile!**

LEARN MORE ABOUT THE MDS ONLINE

IDI Aspect Series Tables are ETL Listed (IEC, UL & CSA Standards) and CE marked.
Technical Specifications are subject to change without notice.

Aspect Tables Key Features

Aspect Series Tables: C-Arm Imaging At Its Best

All Aspect Series tables with cantilevered tabletops are designed to provide these advantages:

- Long, slim-profile wheel base for:
 - Excellent stability and safety
 - Unencumbered C-arm access
 - Very low table weight for easy maneuverability and transport
- Small base pedestal and very large, unencumbered imaging areas.
- High-quality, carbon fiber tops for excellent fluoroscopic imaging with minimal x-ray attenuation
- Highest quality mechanical components for exceptional durability and reliability.
- Sleek, easy-to-clean base and covers
- Multiple table top styles for optimal design and performance based on customer clinical requirements
- A common platform for a wide range of motorized and manual movements.
- Application-specific designs, the right price-performance solution for every customer.



- Superior C-Arm access
- Exceptional stability & safety
- Both low table weight and...
- High patient weight capacity
- Durable and easy-to-clean design



Aspect Series Imaging Tables Application Selection Chart

•=Typical use ◊=Optional use

Model	Pain Mgmt.	Ortho & G.I.	Vascular & Interventional	Bariatric Swallow Studies	Urology & GYN
EZ-Access	•	•			
100E - 100RT	•	•			
100RTL	•	•	◊		
100 - 4			•		
100 - 4T G2			•		
ISR G2			•		
HIGH-TILT				•	
100UCPlus	◊	◊			•
100US					• (Fertility Clinic)

- 4-Way manual floating tabletop
- Motorized elevation
- Trendelenburg tilt
- Isocentric roll



Catalog # A100-1902

ISR G2 shown above with standard X100-2492 tabletop and optional head extension



ISR G2 shown above with optional X100-2426 tabletop

Isocentric roll $\pm 12^\circ$

Standard top #X100-2492
19.5"/22"/24" x 84"
(49.5/55.8/60.96 x 213.3cm)



- 4-way floating tabletop with panning hand control
- Motorized elevation: 32" - 40" (81-102cm) with 2" (5cm) pad
- Trendelenburg tilt: $\pm 12^\circ$ with auto stop-at-level function
- Isocentric-Roll: $\pm 12^\circ$
- Longitudinal tabletop travel: 32" (81.3 cm)
- Transverse tabletop travel: 8" (20.3 cm)

- Note: Longitudinal float is disabled only when Trendelenburg Tilt is in out-of-level position. Logitudinal float is available on the ISR when Iso-Roll is out-of-level. Includes lock-out button to prevent inadvertent motorized table movements.

Tabletops:

- Cantilevered, carbon fiber tabletop with low x-ray attenuation.
- Standard tabletop dimensions: 19.5"/22"/24" X 84" (49.5cm/55.8cm/60.96cm x 213.3 cm). #X100-2492
- Optional tabletop dimensions: 22"/24" X 84" (55.8cm/60.9cm x 213.3 cm). #X100-2426

Unobstructed imaging area:

- 61" (155 cm) or 73" (185 cm) with optional headrest attached (optional headrest requires tabletop X100-2492)

Patient weight capacity:

- 450 lbs. (204 kg).

Table weight:

- 605 lbs. (274 kg).

Electrical:

- 115 VAC operation (230 V optional, must specify with order).
- Full table operation from internal battery or from AC power while battery is charging.

Table Locking / Transport

- Multi-caster 3-position locking via pedal on table base.
- Fully locked
- Fully unlocked for positioning.
- Steering lock - center casters are directionally locked for easy transport.

Table covers:

- Stainless steel

Accessories included:

- Rail-mounted panning hand control for 4-way float and motorized table movements.
- Pendant hand control (for elevate, trendelburg and roll only)
- Tabletop Pad, 2"
- Patient Restraint Straps

Standard Tabletop

- Includes short, recessed side rails 5" (13 cm) in length at imaging end of table facilitate use of removable headrest extension and also facilitate attachment of catheter tray extension at narrow end of table. Two separate catheter tray extensions are available. One for the pedestal end of table and one for the imaging end of table. Catheter tray extensions are optional and sold separately.



ISR G2 A100-1902 table shown with X100-2492 top and optional A100-2317 headrest extension



ISR G2 shown with X100-2492 table top and A100-1769 pedestal catheter tray extension



ISR G2 shown with X100-2492 table top and A100-2322 head-end catheter tray extension

Optional top #X100-2426
22"/24" x 84"
(55.8/60.9 x 213.3cm)



Optional Accessories for Aspect ISR:

- **Foot Switch** with Safety Hood. Foot control motions are: iso-roll, elevate/lower and Trendelenburg down/up. (Safety hood helps avoid accidental motorized table movement from foot switch). (#A000-2071)
 - **Clamp-on accessory rail** (#A100-1007)
 - **Side-rail clamp** (#C000-0746), rotating, with socket for attachment of accessories with 5/8 inch circular post
 - **Armboard**, quick-release, (#A310-056) rail mounted (requires Clamp-on Accessory Rail)
 - **VAB Armboard** (#A100-2244); carbon fiber, one-piece, extra wide armboard for vascular access procedures (body section slides under patient/table pad). Includes strap and pad.
 - **Arm Board** Carbon fiber, (#A310-059) shoulder mount (attaches by sliding thin section under patient/table pad), flat. Includes pad and strap.
 - **Headrest Extension** (#A100-2317) articulating, removable. Requires tabletop X100-2492.
 - **Tabletop Catheter Tray Extension** (#A100-1769), 24" wide. Mounts to pedestal end of table only.
 - **Imaging End Catheter Tray Extension** (#A100-2322) 22" wide, for Aspect ISR - mounts to imaging end of table only. Requires tabletop X100-2492.
 - **Anesthesia Screen Holders** Flexible C000-0965 or rigid C000-0973
 - **Radiation Shield** Articulating, rail-mounted. (A610-051)
 - **Peripheral extension** Carbon fiber extension, mounts to imaging end of table only. 22" wide. Maximum weight for this extension is 25 lbs or 11.4 Kgs. - Requires tabletop X100-2492.
-
- **Optional Tabletop X100-2426**
Does not include recessed side rails at imaging end of table. Catheter tray extension may be attached to the pedestal end of table only (pedestal end of table). Optional headrest extension is not available with this tabletop version. Catheter tray extension is optional and sold separately.
 - **Optional headrest** (A100-2317) is compatible with tabletop #X100-2492 only. Headrest extension is optional and sold separately.

Full IDI Table Accessory Catalog

or: <http://goo.gl/BlwMO9>

- 4-Way manual floating tabletop
- Motorized elevation
- Trendelenburg tilt



Catalog # A100-1416
100-4T G2 shown with X100-2426 tabletop

Standard top #X100-2426
22"/24" x 84" (55.8/60.9 x 213.3cm)

Table motions:

- 4-way floating tabletop with panning hand control
- Motorized Elevation: 32" - 42" (81-107cm) with 2" (5cm) pad
- Trendelenburg Tilt: $\pm 12^\circ$ with auto stop-at-level function
- Longitudinal tabletop travel: 32" (81.3 cm)
- Transverse tabletop travel: 8" (20.3 cm)
- Note: Longitudinal float is disabled only when Trendelenburg Tilt is in out-of-level position. Includes lock-out button to prevent inadvertent motorized table movements.

Tabletops:

- Cantilevered, carbon fiber tabletop with low x-ray attenuation.
- Standard tabletop dimensions: 22"/24" X 84" (55.8cm/60.9cm x 213.3 cm) # X100-2426
- Optional tabletop dimensions: 19.5"/22"/24" X 84" (49.5cm/55.8cm/60.96cm x 213.3 cm)

Unobstructed imaging area:

- 61" (155 cm) or 73" (185 cm) with optional headrest attached (optional headrest requires tabletop X100-2492)

Patient weight capacity:

- 450 lbs. (204 kg).

Table weight:

- 605 lbs. (274 kg).

Electrical:

- 115 VAC operation (230 V optional, must specify with order).
- Full table operation from internal battery or from AC power while battery is charging.

Table Locking / Transport

- Multi-caster 3-position locking via pedal on table base.
- Fully locked
- Fully unlocked for positioning.
- Steering lock - center casters are directionally locked for easy transport.

Table covers:

- Stainless steel

Accessories included:

- Rail-mounted panning hand control for 4-way float and motorized table movements.
- Pendant hand control for elevate, trendelburg.
- Tabletop Pad, 2"
- Patient Restraint Straps

Standard Tabletop X100-2426

- **Does not** include recessed side rails at imaging end of table. Catheter tray extension may be attached to the pedestal end of table only (pedestal end of table). Optional headrest extension is not available with this tabletop version. Catheter tray extension is optional and sold separately.



100-4T G2 A100-1902 table shown with X100-2492 top and optional A100-2317 headrest extension



100-4T G2 table shown with X100-2492 table top and A100-1769 pedestal catheter tray extension



100-4T G2 table shown with X100-2492 table top and A100-2322 head-end catheter tray extension

Optional top #X100-2492
19.5"/22"/24" x 84"
(49.5/55.8/60.96 x 213.3cm)



Optional Accessories for Aspect 100-4T:

- **Foot Switch** Foot control motions are: elevate/lower and Trendelenburg down/up. (#A100-2360)
 - **Clamp-on accessory rail** (#A100-1007)
 - **Side-rail clamp** (#C000-0746), rotating, with socket for attachment of accessories with 5/8 inch circular post
 - **Armboard** Quick-release, (#A310-056) rail mounted (requires Clamp-on Accessory Rail)
 - **VAB Armboard** (#A100-2244); carbon fiber, one-piece, extra wide armboard for vascular access procedures (body section slides under patient/table pad). Includes strap and pad.
 - **Arm Board** Carbon fiber, (#A310-059) shoulder mount (attaches by sliding thin section under patient/table pad), flat. Includes pad and strap.
 - **Headrest Extension** (#A100-2317) articulating, removable. Requires tabletop X100-2492.
 - **Tabletop Catheter Tray Extension** (#A100-1769), 24" wide. Mounts to pedestal end of table only.
 - **Imaging End Catheter Tray Extension** (#A100-2322) 22" wide. Mounts to imaging end of table only. Requires tabletop X100-2492.
 - **Anesthesia Screen Holders** Flexible C000-0965 or rigid C000-0973
 - **Radiation Shield** Articulating, rail-mounted. (A610-051)
 - **Peripheral extension** Carbon fiber extension, mounts to imaging end of table only. 22" wide. Maximum weight for this extension is 25 lbs or 11.4 Kgs. - Requires tabletop X100-2492
- **Optional Tabletop X100-2492**
Includes short, recessed side rails 5" (13 cm) in length at imaging end of table facilitate use of removable headrest extension and also facilitate attachment of catheter tray extension at narrow end of table. Two separate catheter tray extensions (page 18) are available: One for the pedestal end of table and one for the imaging end of table. Catheter tray extensions are optional and sold separately.
 - **Optional headrest**
(A100-2317) is compatible with tabletop #X100-2492 only. Headrest extension is optional and sold separately.

Full IDI Table Accessory Catalog
or: <http://goo.gl/BlwMO9>

- 4-Way manual floating tabletop
- Motorized elevation



Catalog # A100-566

Standard Top # X100-982
23.5" - 30" x 80"
(59.4 - 76.2 x 203cm)

Optional Top #X100-517
18" - 30" x 80"
(45.7 - 76.2 x 203 cm)

Table motions:

- 4-way manual floating tabletop
 - Longitudinal tabletop float 40" (101.6 cm)
 - Transverse tabletop float 10" (25.4 cm)
- Motorized Elevation 29.9" – 39.7" (75.9 – 100.8 cm) including 2" tabletop pad.

Tabletops:

- Carbon fiber tabletop with low x-ray attenuation
- Standard tabletop dimensions: 23.5" / 30" x 80" (59/72 x 203 cm) (X100-982)
- Optional tabletop dimensions: 18" / 30" x 80" (46 / 76 x 203 cm) (#X100-517)

Unobstructed imaging area:

- 72" (182.9 cm)

Patient weight capacity:

- 450 lbs. (204 kg).

Table weight:

- 490 lbs. (222 kg).

Electrical:

- 115 VAC operation (230 V optional, must specify with order).
- Full table operation from internal battery or from AC power while battery is charging.

Table Locking / Transport

- Locking swivel casters.

Accessories included:

- Rail-mounted panning hand control #A270-126
- Tabletop Pad & Patient Restraint Straps
- 18" Tabletop Width Extender Board (lateral arms support, for 18" wide top only) #A100-435

Aspect 100-4 Optional Accessories

- **Tabletop Catheter Tray Extension** #A100-814
- **Clamp-on accessory rail** (#A100-1007)
- **Armboard, quick-release.** #A310-056. Requires clamp-on accessory rail A100-10007 **Carbon fiber armboard.** Shoulder mount. #A310-059
- **VAB Armboard** Carbon fiber, extra wide one piece #A100-2244
- **Radiation Shield.** Articulating, rail-mounted. #A610-051
- **Tabletop width extender board** with pads for lateral arms support.
 - 18": #A100-435 (included with table)
 - 22": #A100-780

Full IDI Table Accessory Catalog

or: <http://goo.gl/BlwMO9>

- Motorized elevation
- Trendelenburg tilt
- Lateral roll
- Longitudinal travel



Catalog # A100-1254

Standard Top # X100-995
24" x 80" (61 x 203 cm)

Table motions:

- Elevation 31.2" - 41.2" (79.2 - 104.6 cm) including 2" tabletop pad
- Lateral Roll $\pm 20^\circ$
- Trendelenburg $\pm 15^\circ$
- Longitudinal travel 10" (12.4 cm)
- Auto return-to-level button and positional memory

Tabletops:

- Carbon fiber tabletop with low x-ray attenuation
- Standard Tabletop 24" x 80" (61 x 203 cm) #X100-995
- Optional Tabletop with facial cutout. 22" x 80" (56 x 203 cm) #X100-733
- Custom Tabletop 28" x 80" #X100-1325

Unobstructed imaging area:

- 59" (149.9 cm)

Patient weight capacity:

- 450 lbs. (204 kg).

Table weight:

- 460 lbs. (209 kg)

Electrical:

- 115 VAC operation (230 V optional, must specify with order).
- Full table operation from internal battery or from AC power while battery is charging.

Table Locking / Transport

- Locking swivel casters.

Accessories included:

- Pendant hand control, # K000-0197
- 2" Tabletop Pad
- Patient Restraint Straps
- Facial cushion, crescent shape #C000-0597
- Disposable covers for facial cushion, box of 50 #C000-0598

Aspect 100RTL Optional Accessories

Optional Top # X100-733
22" x 80" (56 x 203cm)

Custom Top # X100-1325
28" x 80" (71 x 203cm)

- **Foot control** for all table motions #100-1961
- **Clamp-on Accessory Rail** #A100-1007
- **Armboard, quick-release.** #A310-056. Requires clamp-on accessory rail A100-1007
- **Carbon fiber armboard.** Shoulder mount. #A310-059
- **ScatterGuard radiation shield draping** for 24" rectangular tabletops #X100-996
- **Scatter-Guard radiation shield draping** for 22" tabletops X100-092s

Full IDI Table Accessory Catalog

or: <http://goo.gl/BlwMO9>

- Motorized elevation
- Trendelenburg tilt
- Lateral roll



Catalog # A100-870

Standard Top # X100-995
24" x 80" (61 x 203 cm)

Optional Top # X100-733
22" x 80" (56 x 203cm)

Custom Top # X100-1325
28" x 80" (71 x 203cm)

Table motions:

- Elevation 31.2" - 44.2" (82 - 112 cm) including 2" tabletop pad
- Lateral Roll $\pm 20^\circ$
- Trendelenburg $\pm 15^\circ$
- Auto return-to-level button and positional memory

Tabletops:

- Carbon fiber tabletop with low x-ray attenuation
- Standard Tabletop 24" x 80" (61 x 203 cm) #X100-995
- Optional Tabletop with facial cutout. 22" x 80" (56 x 203 cm) #X100-733
- Custom Tabletop 28" x 80" #X100-1325

Unobstructed imaging area:

- 62" (157.5 cm)

Patient weight capacity:

- 450 lbs. (204 kg).

Table weight:

- 425 lbs. (193 kg)

Electrical:

- 115 VAC operation (230 V optional, must specify with order).
- Full table operation from internal battery or from AC power while battery is charging.

Table Locking / Transport

- Locking swivel casters.

Accessories included:

- Pendant Hand Control #K000-0195
- 2" Tabletop Pad
- Patient Restraint Straps
- Facial cushion, crescent shape #C00-0597
- Disposable covers for facial cushion, box of 50 #C0000-0598

Aspect 100RT Optional Accessories

- **Foot control** for all table motions #100-1960
- **Clamp-on Accessory Rail** #A100-1007
- **Armboard, quick-release.** #A310-056. Requires clamp-on accessory rail A100-1007
- **Carbon fiber armboard.** Shoulder mount. #A310-059
- **ScatterGuard radiation shield draping** for 24" rectangular tabletops #X100-996
- **Scatter-Guard radiation shield draping** for 22" tabletops X100-092

[Full IDI Table Accessory Catalog](#)

or: <http://goo.gl/BlwMO9>

- Motorized elevation
- Trendelenburg tilt



Catalog # A100-658

Standard Top # X100-995
24" x 80" (61 x 203 cm)

Table motions:

- Elevation 30" - 41.8" (76-106 cm) including 2" tabletop pad
- Trendelenburg $\pm 15^\circ$

Tabletops:

- Carbon fiber tabletop with low x-ray attenuation
- Standard Tabletop 24" x 80" (61 x 203 cm) #X100-995
- Optional Tabletop with facial cutout. 22" x 80" (56 x 203 cm) #X100-733
- Custom Tabletop 28" x 80" #X100-1325

Unobstructed imaging area:

- 62" (157.5 cm)

Patient weight capacity:

- 450 lbs. (204 kg).

Table weight:

- 350 lbs. (159 kg)

Electrical:

- 115 VAC operation (230 V optional, must specify with order).
- Full table operation from internal battery or from AC power while battery is charging.

Table Locking / Transport

- Locking swivel casters.

Accessories included:

- Pendant Hand Control # K000-0054
- 2" Tabletop Pad
- Patient Restraint Straps
- Facial cushion, crescent shape #C00-0597
- Disposable covers for facial cushion, box of 50 #C0000-0598

Aspect 100 T Optional Accessories

Optional Top # X100-733
22 x 80" (56 x 203cm)

Custom Top # X100-1325
28" x 80" (71 x 203cm)

- **Foot control** Substitute for hand control. Cannot use hand and foot control at the same time. #A100-500
- **Clamp-on Accessory Rail** #A100-1007
- **Armboard, quick-release.** #A310-056. Requires clamp-on accessory rail A100-1007
- **Carbon fiber armboard.** Shoulder mount. #A310-059
- **ScatterGuard radiation shield draping** for 24" rectangular tabletops #X100-996
- **Scatter-Guard radiation shield draping** for 22" tabletops X100-092

Full IDI Table Accessory Catalog

or: <http://goo.gl/BlwMO9>

- Motorized elevation



Catalog # A100-402

Standard Top # X100-995
24" x 80" (61 x 203 cm)

Optional Top # X100-733
22" x 80" (56 x 203cm)

Custom Top # X100-1325
28" x 80" (71 x 203cm)

Table motion:

- Elevation 28" - 39.8" (71-101 cm) including 2" tabletop pad

Tabletops:

- Carbon fiber tabletop with low x-ray attenuation
- Standard Tabletop 24" x 80" (61 x 203 cm) #X100-995
- Optional Tabletop with facial cutout. 22" x 80" (56 x 203 cm) #X100-733
- Custom Tabletop 28" x 80" #X100-1325

Unobstructed imaging area:

- 66" (167.6 cm)

Patient weight capacity:

- 450 lbs. (204 kg).

Table weight:

- 350lbs. (159 kg)

Electrical:

- 115 VAC operation (230 V optional, must specify with order).
- Full table operation from internal battery or from AC power while battery is charging.

Table Locking / Transport

- Locking swivel casters.

Accessories included:

- Pendant Hand control # K000-0041
- 2" Tabletop Pad
- Patient Restraint Straps
- Facial cushion, crescent shape #C00-0597
- Disposable covers for facial cushion, box of 50 #C0000-0598

Aspect 100E Optional Accessories

Optional Top # X100-733
22" x 80" (56 x 203cm)

Custom Top # X100-1325
28" x 80" (71 x 203cm)

- **Foot control** for all table motions. Cannot use hand and foot control at the same time. #100-758
- **Clamp-on Accessory Rail** #A100-1007
- **Armboard, quick-release.** #A310-056. Requires clamp-on accessory rail A100-1007
- **Carbon fiber armboard.** Shoulder mount. #A310-059
- **ScatterGuard radiation shield draping** for 24" rectangular tabletops #X100-996
- **Scatter-Guard radiation shield draping** for 22" tabletops X100-092

Full IDI Table Accessory Catalog

or: <http://goo.gl/BlwMO9>

- Motorized elevation
- Very low minimum height



Catalog # A100-2100



Standard Top # X100-995
24" x 80" (61 x 203 cm)

Optional Top # X100-733
22" x 80" (56 x 203cm)

Custom Top # X100-1325
28" x 80" (71 x 203cm)

Table motion:

- Elevation 21" - 40" (56-203 cm) including 2" tabletop pad

Tabletops:

- Carbon fiber tabletop with low x-ray attenuation
- Standard Tabletop 24" x 80" (61 x 203 cm) #X100-995
- Optional Tabletop with facial cutout. 22" x 80" (56 x 203 cm) #X100-733
- Custom Tabletop 28" x 80" #X100-1325

Unobstructed imaging area:

- 66" (167.6 cm)

Patient weight capacity:

- 450 lbs. (204 kg).

Table weight:

- 290 lbs. (132 kg)

Electrical:

- 115 VAC operation (230 V optional, must specify with order).
- Full table operation from internal battery or from AC power while battery is charging.

Table Locking / Transport

- Locking swivel casters.

Accessories included:

- Pendant Hand control. # K000-0041
- Tabletop Pad 2" thick
- Patient Restraint Straps
- Facial cushion, crescent shape #C00-0597
- Disposable covers for facial cushion, box of 50 #C0000-0598

EZ-ACCESS Optional Accessories

- **Foot control** for all table motions. Cannot use hand and foot control at the same time. #100-758
- **Clamp-on Accessory Rail** #A100-1007
- **Armboard, quick-release.** #A310-056. Requires clamp-on accessory rail A100-1007
- **Carbon fiber armboard.** Shoulder mount. #A310-059
- **ScatterGuard radiation shield draping** for 24" rectangular tabletops #X100-996
- **Scatter-Guard radiation shield draping** for 22" tabletops X100-092

Full IDI Table Accessory Catalog

or: <http://goo.gl/BlwMO9>

- Swallowing studies for post-surgical gastric band adjustment
- Other C-Arm procedures requiring upright patient imaging or loading.



Catalog # A100-1708



High-Tilt Top
28" x 80" (71 x 203cm)

Table motion:

- Motorized tilt from horizontal to 75° upright with footswitch operator control
- Tilt speed ≈ 4°/sec. (≈ 20 seconds to full stroke)

Tabletop:

- Carbon fiber tabletop: artifact-free, low x-ray attenuation
- Tabletop size: 24"W x 80"L (61cm x 203cm)
- Built-in footboard for "step-on" patient loading with table in upright position
- Fixed tabletop height in horizontal position: 32" (81.3 cm)
- Footboard position with table upright: 5" (12.7 cm) above floor
- Ultra-stable during tilt motion and in any table position
- Easy C-arm imaging access in any tabletop position
- Standard US siderails (3/8" x 1 1/8") for handgrips attachment

Unobstructed imaging area:

- 55" (139.7 cm)

Patient weight capacity:

- 525 lbs. (238 kg).

Table weight:

- 605 lbs. (274 kg)

Electrical:

- 115 VAC operation (230 V optional, must specify with order).
- Full table operation from internal battery or from AC power while battery is charging.

Table Locking / Transport

- Locking swivel casters.

Accessories included:

- Footswitch #A100-1823
- Tabletop Pad 2" thick
- Patient Restraint Straps
- Facial cushion, crescent shape #C000-0597
- Disposable covers for facial cushion, box of 50 #C000-0598

Aspect High-Tilt™ Optional Accessories

- **Pendant Hand control** # K000-0041. Substitute for footswitch. Cannot use pendant hand control and foot control at the same time.
- **Clamp-on Accessory Rail** #A100-1007
- **Armboard, quick-release.** #A310-056. Requires clamp-on accessory rail A100-1007
- **Carbon fiber armboard** Shoulder mount. #A310-059
- **ScatterGuard radiation shield draping** for 24" rectangular tabletops #X100-996
- **Scatter-Guard radiation shield draping** for 22" tabletops X100-092

Full IDI Table Accessory Catalog

or: <http://goo.gl/BlwMO9>

- Motorized elevation
- Trendelenburg tilt
- Longitudinal tabletop travel
- Transverse tabletop travel



Catalog # A100-1517

Leg-holders are not included with the table and must be ordered separately. May also use any leg-holders with standard US table side-rail attachment.



Table shown with tabletop extension attached

Aspect 100UCPlus
Tabletop Extension
34" x 24"
(86 x 61 cm)

Aspect 100UCPlus Tabletop
28" x 46.5"
(71 x 118cm)

Table motion:

- Trendelenburg Tilt: $\pm 15^\circ$
- Longitudinal tabletop travel: 10" (25.4 cm)
- Transverse tabletop travel: $\pm 3.5"$ (8.8 cm)
- Elevation: 33.3" – 43.1" (84.5 - 109.4cm) including 2" tabletop pad

Tabletop:

- Carbon fiber tabletop: artifact-free, low x-ray attenuation
- Tabletop dimensions: 28" x 46.5" (71cm x 118cm)
- Radiolucent tabletop extension, 34" L x 24" W (86 x 61 cm)
- 20" L x 25" W (51 x 63.5 cm) imaging area for endourology
- 34" L x 24" W (86.4 x 61 cm) imaging area on extension
- Total length of radiolucent imaging area with extension attached: 54" (137 cm)

Unobstructed imaging area:

- 55" (139.7 cm)

Patient weight capacity:

- 525 lb. (238 kg) in endourology position with patient upper body over main tabletop section
- 400 lbs. (181 kg) with patient upper body on tabletop extension
- Load capacity on extension only: 250 lbs. (113.4kg)

Table weight:

- 670 lbs. (304 kg)
- Table Top Extension weight: 16 lbs

Electrical:

- 115 VAC operation (230 V optional, must specify with order).
- Full table operation from internal battery or from AC power while battery is charging

Table Locking / Transport

- 5" (12.7 cm) locking swivel casters.

Accessories included:

- Pendant Hand Control. # K000-0158
- Foot Control. #A100-1540
- Radiographic cassette tray, loads from either side of table
- Collapsible and removable drain bag hoop
- Radiolucent tabletop extension with 2" pad
- Armboard (1), rail mounted, with pad and strap
- Stirrups mounting rail extender kit (For boot-style legholders sold by IDI or Allen Medical)
- Removable Radiation Shield Flap for perineal end of table
- Tabletop pad, 2" thick with waterproof covering
- 1 disposable vinyl table cover
- Disposable drain bag and hose assembly, box of 20
- Patient Restraint Straps
- Disposable covers for footswitch and radiation shield flap, box of 50



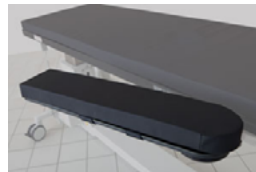
- **Lithotomy Legholders** (Pair) Boot style, pneumatic assist with one-hand adjustment, with pads. For patients up to 350 lbs (158kg). Includes pair of side-rail clamps. #A100-2246



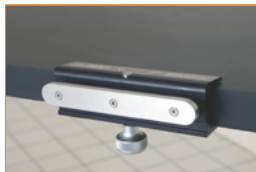
- **Heavy Duty Lithotomy Legholders** (Pair) Boot style, pneumatic assist with one-hand adjustment, with pads. For patients up to 525 lbs (238kg). Includes pair of side-rail clamps. #A100-2247.



- **Physician Elbow Supports** (pair) Removable C000-0594



- **Armboard** Rail mounted, with pad and strap. Note: One arm board is included with table #A310-056



- **Clamp-on Accessory Rail** For use with 100UC Extension. Rail is 6" long x 3/8" thick x 1-1/8" high #A100-2218

Full IDI Table Accessory Catalog
or: <http://goo.gl/BlwMO9>

Aspect 100UCPLUS Consumables



- **Vinyl Urology Table Covers** Box of 20. #C000-0645



- **Uro Drain Bags with Hose** Disposable drain bag and hose assembly. Box of 20. #C000-0593



- **Uro Drain Support Hoop** Collapsible & removable drain ba-support hoop. #C000-0595



- **Disposable Covers** for Aspect 100UC Foot Controls. 24" x 20". Box of 50. C000-0492



- **Uro Fluid Collection Units**
 - 5 gallon capacity, Box of 10 #C000-0612
 - 10 liter capacity, Box of 10 #C000-0905
 - 20 liter capacity, Box of 10 #C000-0916

- GYN/Fertility Clinic Mobile Imaging Table
- Motorized elevation



Catalog # A100-1479

Basic Knee Crutches (#A100-2248) are included with the table.

Aspect 100US Tabletop
24" x 46"
(61 x 117cm)

Table motion:

- Motorized tabletop elevation with foot control
- Elevation 27" – 39" (68.5 – 99 cm), including 1" tabletop pad

Tabletop:

- Carbon fiber tabletop: artifact-free, low x-ray attenuation
- 24" x 46" (61 x 117 cm)

Unobstructed imaging area:

- 22" W x 32" L (61 x 81 cm)

Patient weight capacity:

- 450 lb. (204 kg)

Table weight:

- 395 lbs. (179 kg)

Electrical:

- 115 VAC operation (230 V optional, must specify with order).
- Full table operation from internal battery or from AC power while battery is charging.

Table Locking / Transport

- Locking swivel casters

Accessories included:

- Basic knee crutches #A100-2248 with rotating side rail clamps.
- Leg support tabletop extension
- Tabletop Pad, 1"
- Footswitch control #A100-758
- Patient Restraint Straps

Aspect 100US Optional Accessories



- **Armboard.** Quick-release, rail-mounted, with pad #A310-056



- **Pendant Hand control** #K000-0041



- **Side-rail clamp.** rotating, with socket for attachment of accessories with 5/8 inch circular post. #C000-0746

Full IDI Table Accessory Catalog

or: <http://goo.gl/BlwMO9>

Aspect Four-Way Float Top Tables Specifications & Accessory Matrix

•=Standard feature ◊=Optional NA=Not available

	100 - 4	100 - 4T G2	ISR G2
Elevate (Height with 2" pad)	29.9 - 39.7" 75.9 - 100.8 cm	32 - 42" 78.4 - 103.8cm	32 - 40" 81 - 102cm
Trendelenburg Tilt	NA	±10°	±12°
Lateral Tilt	NA	NA	±12°
Longitudinal Tabletop Motion	40" float 102 cm	32" float 81 cm	32" float 81 cm
Transverse Tabletop Motion	10" float 25 cm	8" float 20 cm	8" float 20 cm
Standard Tabletop Size	18/30" x 80" 46/76 x 203 cm	24" x 84" 61 x 213 cm	22"/24" x 84" 56 /61 x 213 cm
Optional Tabletop Size	23.5-30" x 80" 59-76 x 203 cm	NA	NA
Imaging Area	72" 182.9 cm	62" 157.5 cm	61" 154.9 cm 73" (185.4 cm)with headrest attached
Patient Capacity	450 lb. 204 kg	450 lb. 204 kg	450 lb. 204 kg
Table Weight	490 lb. 222 kg	605 lb. 274 kg	605 lb. 274 kg
Tabletop Pad (2" thick)	•	•	•
Restraint Straps	•	•	•
Pendant Hand Control	NA	NA	•
4-way Panning Hand Control	•	•	•
Foot Control	NA	◊	◊
Armboard, rail mounted	NA	◊	◊
Armboard, carbon fiber	◊	◊	◊
VAB Armboard	◊	◊	◊
Clamp-on Accessory Rail	NA	◊	◊
Catheter Tray extension	◊	◊	◊
Headrest extension	NA	NA	◊
Table-Mounted Radiation Shield	◊	◊	◊
Anesthesia Screen Holder	NA	◊	◊

Pain Management Table Specifications & Accessory Matrix

•=Standard feature ◊=Optional NA=Not available

	EZ-Access	100E	100T	100RT	100RTL
Elevate (Height with 2" pad)	21" – 40" (53 – 102cm)	28" – 39.8" (71 – 101 cm)	30" - 41.8" (76 - 106cm)	32.4" - 44.2" (82 - 112 cm)	31.2" - 41.2" (79 - 105 cm)
Trendelenburg Tilt	NA	NA	±15°	±15°	±15°
Lateral Tilt	NA	NA	NA	20°	20°
Longitudinal Tabletop Motion	NA	NA	NA	NA	10" 25 cm
Transverse Tabletop Motion	NA	NA	NA	NA	NA
Standard Tabletop Size	24" x 80" 61 x 203cm	24" x 80" 61 x 203 cm	24" x 80" 61 x 203 cm	24" x 80" 61 x 203 cm	24" x 80" 61 x 203 cm
Optional Tabletop Size	22" x 80" 56 x 203 cm with facial cut-out	22" x 80" 56 x 203 cm with facial cut-out	22" x 80" 56 x 203 cm with facial cut-out	22" x 80" 56 x 203 cm with facial cut-out	22" x 80" 56 x 203 cm with facial cut-out
Custom Tabletop Size	28" x 80" 71 x 203 cm	28" x 80" 71 x 203 cm	28" x 80" 71 x 203 cm	28" x 80" 71 x 203 cm	28" x 80" 71 x 203 cm
Imaging Area	68" 172.7 cm	66" 167.6 cm	62" 157.5 cm	62" 157.5 cm	59" 149.9 cm
Patient Capacity	450 lb. 204 kg	450 lb. 204 kg	450 lb. 204 kg	450 lb. 204 kg	450 lb. 204 kg
Table Weight	290 lb. 132 kg	350 lb. 159 kg	350 lb. 159 kg	425 lb. 193 kg	460lb. 209 kg
Tabletop Pad (2" thick)	•	•	•	•	•
Restraint Straps	•	•	•	•	•
Facial Support Cushion	•	•	•	•	•
Pendant Hand Control	•	•	•	•	•
Foot Control	◊	◊	◊	◊	◊
Armboard, rail mounted	◊	◊	◊	◊	◊
Armboard, carbon fiber	◊	◊	◊	◊	◊
VAB Armboard	◊	◊	◊	◊	◊
Clamp-on Accessory Rail	◊	◊	◊	◊	◊
Scatter-Guard Radiation Shield	◊	◊	◊	◊	◊

Aspect Endourology Tables Specifications & Accessory Matrix


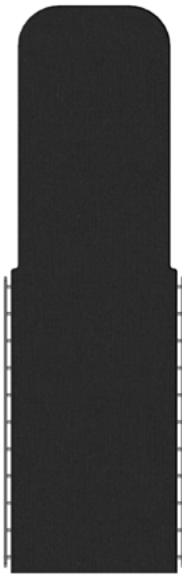
•=Standard feature ◊=Optional NA=Not available

• Standard feature ◊ Optional NA Not available	100UC Plus	100US
Elevate (Height without pad)	31.3" – 41.1" (79.4 – 104.4 cm)	26" – 38" (66 – 96.5cm)
Trendelenburg Tilt	± 15°	NA
Transverse travel	± 3.5", 7" total (± 8.9 cm, 17.8 cm total)	NA
Longitudinal Tabletop Motion	10" (25.4 cm)	NA
Tabletop Size	28"W x 46"L (71 x 117 cm)	24"W x 46"L (61 x 117 cm)
Tabletop Extension Size	24"W x 34"L (61 x 86 cm)	NA
Imaging Area	Main tabletop: 25"W x 20"L (63.5 x 50.8 cm)	22"W x 32"L (56 x 81 cm)
Imaging Area with Table Extension	54" (137 cm)	NA
Patient Weight Capacity	Upper body on main table: 525lb. (238 kg) Upper body on extension: 400 lbs (181kg) Load capacity on extension only: 200 lbs (90.7kg)	450 lbs (204 kg)
Table Weight	670 lb. 306 kg	395 lbs (179 kg)
Tabletop Pad (2" thick)	•	•
Tabletop extension with pad	•	Leg support tabletop extension
Hand Control Pendant and Footswitch Control	•	Footswitch only
Patient Restraint Straps	•	•
Removeable Drain Bag Support Hoop	•	◊
Disposable Drain Bag & Hose Assembly, Box of 20	•	◊
Removable radiation shield flap for perineal end of table	•	◊
Armboard, rail-mounted with pad and strap	•	◊
Disposable covers for footswitch, box of 50	•	◊
Radiographic cassette tray	•	NA
Basic Knee Crutches with rotating side-rail clamps	NA	•


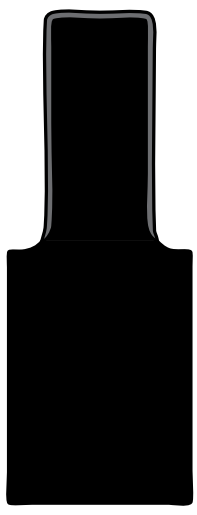
Tabletops for Aspect Mobile Imaging Tables

All Aspect Series Tabletops feature very low attenuation, carbon fiber construction. Standard tops may be substituted with optional sizes/styles as shown below at no extra charge.

Aspect ISR G2 and 100-4T G2 Tabletops

	
Standard with Aspect ISR G2 Optional with Aspect 100-4T G2	Standard with Aspect 100-4T G2 Optional with Aspect ISR G2
X100 - 2492	X100 - 2426
19.5"/22"/24" x 84" (49.5cm/55.8cm/60.96cm x 213.3 cm)	22"/24" x 84" (55.8cm/60.9cm x 213.3 cm)

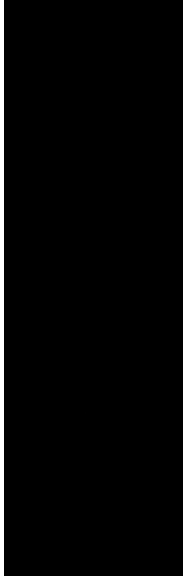


Aspect 100 - 4 Tabletops

	
Standard	Optional
X100 - 982	X100 - 517
23.5" – 30" W x 80" L (59.4 – 76.2 x 203 cm)	18" - 30" W x 80" L (45.7 – 76.2 x 203 cm)

Tabletops for Aspect Mobile Imaging Tables

All Aspect Series Tabletops feature very low attenuation, carbon fiber construction. Standard tops may be substituted with optional sizes/styles as shown below. There is an additional charge for the X100-1325 tabletop.

Aspect 100E, EZ-Access, 100T, 100RT and 100RTL Tabletops

		
Standard	Optional With facial cutout	Custom
X100 - 995	X100 - 733	X100-1325
24" x 80" (61 x 203 cm)	22" x 80" (56 x 203 cm)	28" x 80" (71 x 203 cm)

Product Support & Customer Service

Hours: 8:00 AM-5:00 PM Eastern Standard Time

Phone: 978-829-0009

Toll Free: 877-304-5434

Fax: 978-829-0027

FOR GENERAL INQUIRIES OR ORDER STATUS: customerservice@imagediagnostics.com

FOR INCOMING ORDERS AND PLACEMENT OF PO'S: orders@imagediagnostics.com

FOR PRODUCT INQUIRIES: sales@imagediagnostics.com

TO SCHEDULE A PRODUCT DEMO: demo@imagediagnostics.com

TO ORDER CONSUMABLES: consumables@imagediagnostics.com

Website: <http://ImageDiagnostics.com>